

## TECHNICAL RIDER - DAKH DAUGHTERS (Ukraine)

Performance : UKRAINE FIRE

Updated 08/01/2024

Please read carefully prior to signing contract.

Please distribute a copy of this rider to all staff involved in the technical set up.



---

### GENERAL

---

- To make concert «UKRAINE FIRE» possible, it's necessary to follow out ALL the items of this document.  
If necessary, it could be hang up the doors opening and keep technical check till all technical defects of the system will be recovered, or out-of-service or inapplicable (to items of this document) equipment will be replaced
- The performance space must be technically prepared and available exclusively to Artist for a technical check (sound, light, video)
- All technical set-up must be completed before Artist arrives on site. Sufficient personnel shall be present to assist in the technical check and, if needed, make adjustments. These personnel must remain present on the premises until the technical rehearsal has been completed
- If you have any question or problem according to any item of this document - **please contact us.**

---

### STAGE

---

- Minimum stage dimensions: 8 x 5 m, height – 5 m
- Riser: 8 x 2 m, height – 0,6 m  
If the stage is less than 10 m width, the riser should be 6 x 2 m
- The front side of riser should be covered by white or light grey stage skirt – for the front video projection
- 3 black chairs without rests

---

---

## SOUND

---

- The Dakh Daughters needs **2 (two) hours** of pure time for sound check  
All components of sound system must be installed, plugged and checked before their arriving.
- Presence of sound operator plus minimum 1 stage man during whole sound check is obligatory.

### SOUND EQUIPMENT:

- **Main Stereo PA:**

1. Line array systems: L-Acoustics, Adamson, d&b audiotechnik, Meyer Sound
2. Active division on 3-4 lines: Sub, Low, Mid, Hi
3. Power and configuration of the system must be coordinated before the arriving of the sound engineer.  
**Pointer:** sound pressure 102 dB in the acoustic center of venue
4. If you don't use fabric (standard) presets, system processor has to be unlocked and available for changing all preferences.
5. In the venue more than 1000 people capacity the usage of line array is obvious.
6. PA System must be configured with separate Main (L+R) Buss & Subwoofer Buss.
7. Subwoofer system need to be in cardioid direction.

- **FrontFill:**

1. Acoustic of small sizes and low power for amplification first rows in a big venue, open air and in venues with wide stage
2. Two-four low-profile cabinets.

### FOH:

FOH location should be exactly in the center of action of sound components, in front of the stage. To count the right FOH location, please use the rule of isosceles triangle. No any exceptions – FOH can't be behind or sideways of the stage, behind the screen, in acoustic hole. Sound engineer should have possibility to see the whole stage.

### FOH Limiters/Compressors:

1. It's impossible to use artificial limiters in system. Possible to use only fabric presets of limitation of level
2. Customer and equipment supplier promise to provide full and unobstructed access for sound engineer to all parts of sound system.

### FOH MIXING CONSOLE (Only digital):

- YAMAHA CL5 (preferred) no QL
- YAMAHA RIVAGE PM10/7/5
- ALLEN & HEATH dLive or avantis (with DANTE or Soundgrid card)

**BACKLINE list from local technical provider:**

- Weighted full size keyboard 88 keys (with sustain pedal). Model: Nord Stage 3 (preferred), Roland RD 700/800 or similar
- X-bracing keyboards stand
- 2 (two) x Double Bases 4/4 (3/4 is possible), **with the Pickups** (D. Gage "The Realist" or similar)
- Accordion **37 keys, 96 basses, format 7/8**. One of these models: Weltmeister, Horch, Hohner, Fantini
- 2 (two) x Kick drums 22" Possible models: Tama STAR or Starclassic, DW Collectors, Yamaha Maple custom, Ludwig with 2 (two) Kick drum pedals Tama Iron Cobra or DW 9000
- Snare drum 14" x 8" (preferred) or 14" x 6,5" Tama STAR, Starclassic, Yamaha Maple Custom, Sonor with Snare drum stand
- Hi-Hat with stand (Zildjian A custom)
- Ride cymbal with stand (Zildjian A custom)
- Conga drum 12,5" LP Giovanni or Meinl Headliner without stand
- 2 x Drum carpets 3m x 2m and 2m x 2m
- 2 x Adjustable drum stools
- 8 x ¼" TS to ¼" TS (Jack) cable

**We will bring :**

- Cello – Cello 1 with Stand for Cello
- 2 x Stands for Double basses
- Guitar Acoustic with Stand for Guitar
- Violin
- Floor Tom

**MICROPHONES:**

- 3 x Shure Beta 52A (2 short stands) – Kick drums, Floor tom Bottom
- 2 x Sennheiser E 904 (clip-on) – Snare, Floor tom Top
- 1 x Shure SM 57 (medium stand) – Conga
- 1x Shure SM58 (near the FOH)
- 4 x NEUMANN KM184 (2 medium stands and 2 tall stands) – Hi-Hat, Ride cymbal, ambiance
- 2 x DPA 4099 (clip-on) – Accordion L+R : with a **WIRELESS** system
- 7 x Active D.I. (BSS AR 133, Klark, Radial)

**We will bring :**

- 6 x Wireless systems, headsets and transmitters/receivers.  
Sennheiser EW 500 G3 series Freq. range 566-608 MHz

**MONITORING:**

- **We need 6 (six) Wireless monitors (in-ear) with earphones:**
  - Sennheiser SR2000 / SR3000
  - SHURE PSM 900 / 1000
  - 4 mono and 2 stereo

**All wireless systems are obviously switched with active combiners with usage of outside antennas.**

We need 22 x AA fresh batteries **DURACELL Industrial (ONLY)** for each show and 1 fresh 6LR61 battery

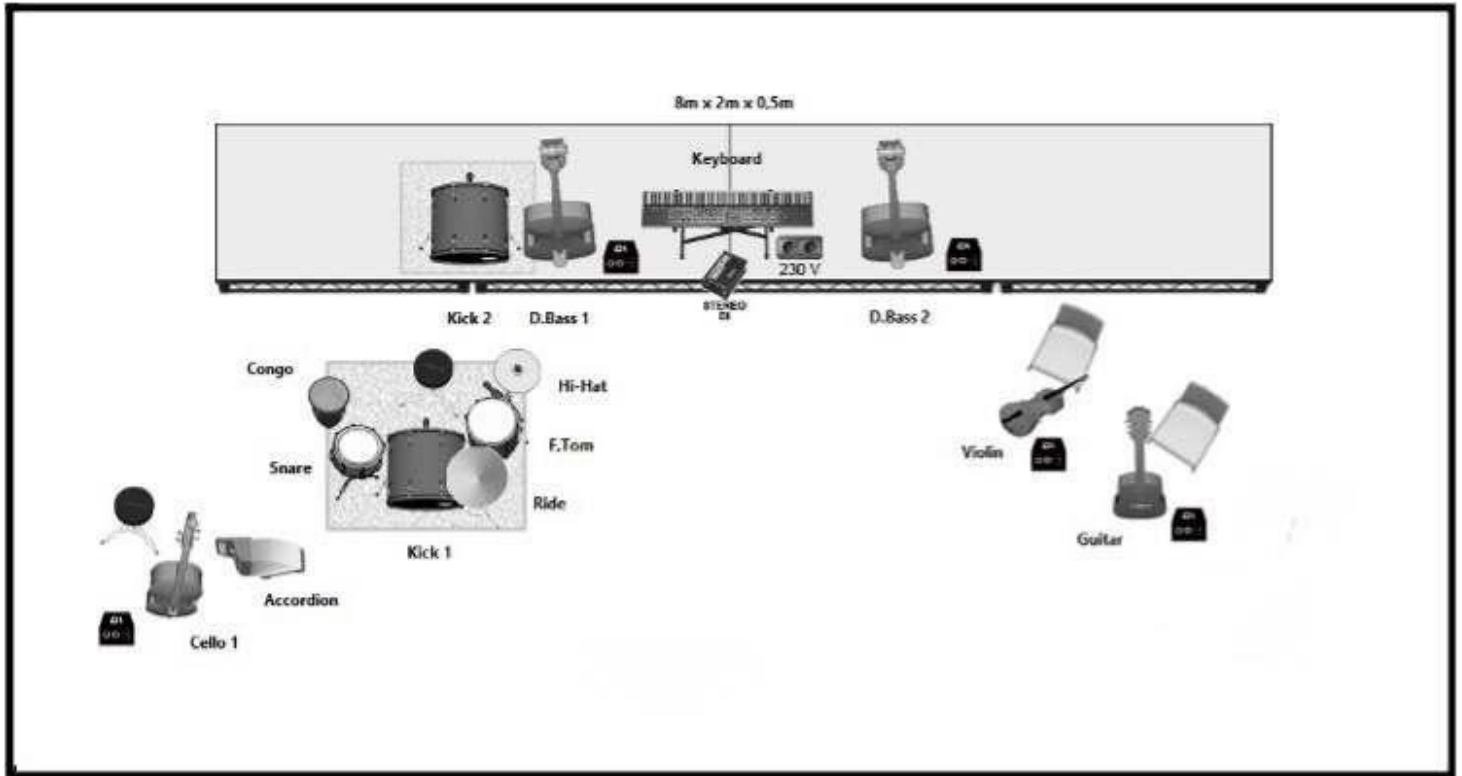
## INPUT LIST /Patch List

1.	VOX 1 (SOLYA)	Our	Wireless Headset <b>our</b>	Receivers located near the stage box
2.	VOX 2 (RUSYA)	Our	Wireless Headset <b>our</b>	Receivers located near the stage box
3.	VOX 4 (BIDA)	Our	Wireless Headset <b>our</b>	Receivers located near the stage box
4.	VOX 5 (ZO)	Our	Wireless Headset <b>our</b>	Receivers located near the stage box
5.	VOX 6 (ANYA)	Our	Wireless Headset <b>our</b>	Receivers located near the stage box
6.	Kick 1	Shure Beta 52A	Short stand	
7.	Kick 2	Shure Beta 52A	Inside the drum	
8.	Snare	Sennheiser E 904	Clip-on	
9.	Hi-Hat	Neumann KM184	Tall boom	+ 48v
10.	Floor Tom top	Sennheiser E 904	Clip-on	
11.	Floor Tom bottom	Shure Beta 52A	Short stand	
12.	Ride	Neumann KM184	Medium boom	+ 48v
13.	Conga	Shure SM 57	Medium boom	
14.	Double Bass 1	BSS ar133 / Klark DN100	Active D.I.	+ 48v 0dB PAD
15.	Double Bass 2	BSS ar133 / Klark DN100	Active D.I.	+ 48v 0dB PAD
16.	Cello 1	BSS ar133 / Klark DN100	Active D.I.	+ 48v 0dB PAD
17.	Keyboard L	BSS ar133 / Klark DN100	Active D.I.	+ 48v 0dB PAD
18.	Keyboard R	BSS ar133 / Klark DN100	Active D.I.	+ 48v 0dB PAD
19.	Accordion Left Hand	DPA 4099A	<b>WIRELESS</b>	
20.	Accordion Right Hand	DPA 4099A	<b>WIRELESS</b>	
21.	Violin	BSS ar133 / Klark DN100	Active D.I.	+ 48v 0dB PAD
22.	Guitar Acoustic	BSS ar133 / Klark DN100	Active D.I.	+ 48v 0dB PAD
23.	AMB Stage L	Neumann KM184	Tall Boom	+ 48v
24.	AMB Stage R	Neumann KM184	Tall Boom	+ 48v
25.	Speak	SM58		Located near the FOH

## OUTPUT LIST /Patch List

1.	SOLYA	1 wireless mono In-ear	Transmitters located near the stage box
2-3	RUSYA	1 wireless stereo In-ear	Transmitters located near the stage box
4	BIDA	1 wireless mono In-ear	Transmitters located near the stage box
5	ZO	1 wireless mono In-ear	Transmitters located near the stage box
6	ANAYA	1 wireless mono In-ear	Transmitters located near the stage box
7-8	SPARE/CUE	1 wireless stereo In-ear	Transmitters located near the stage box

## Stage Plan

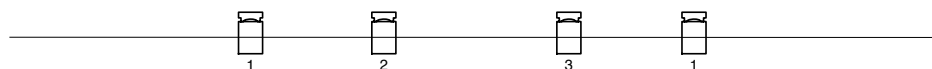
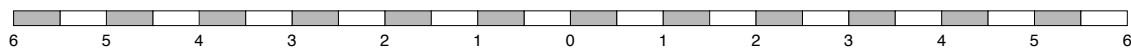
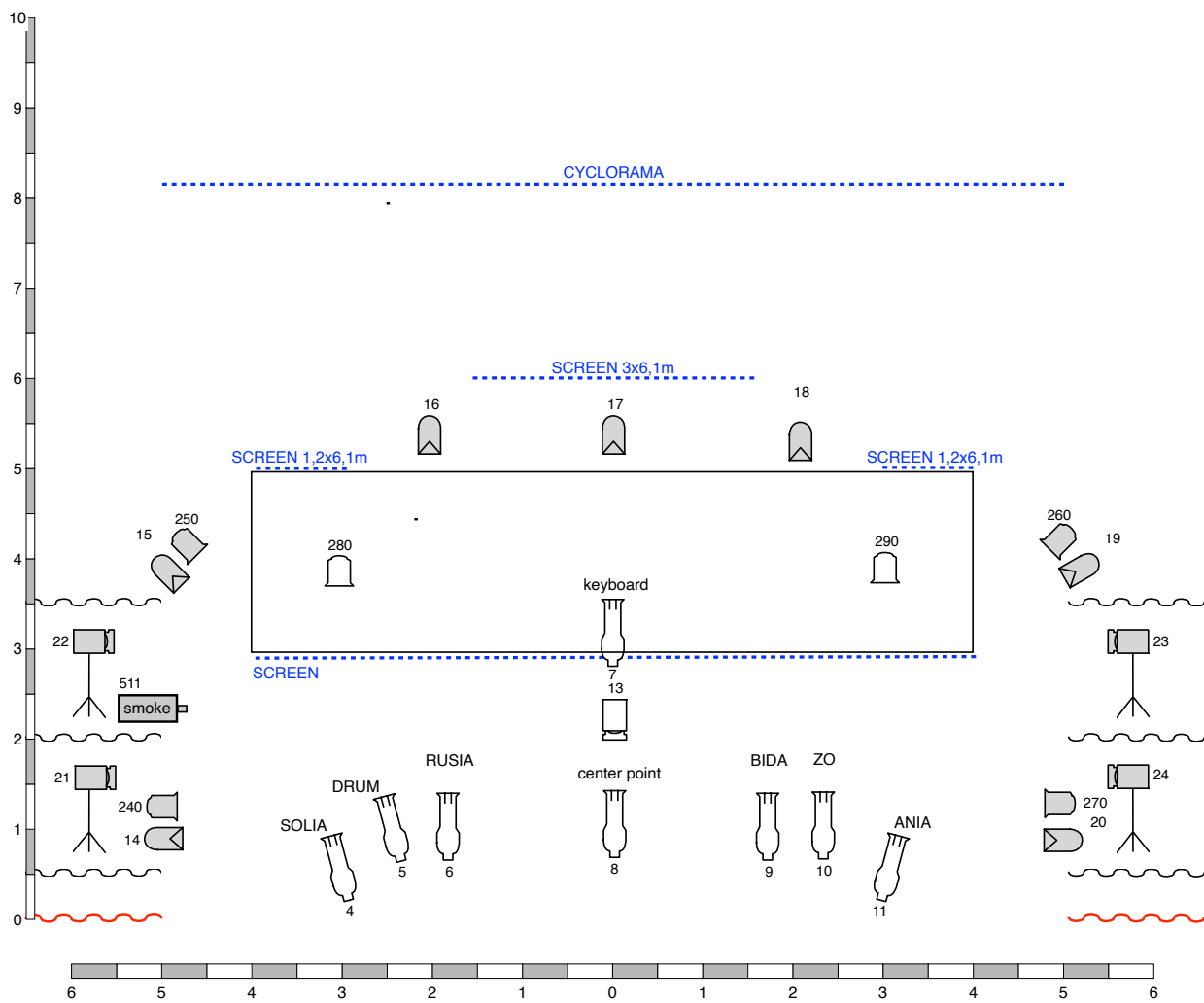


# LIGHT

In theatre type venue we need:

- 8 Profiles 25-50° 750-1000 W
- 9 PC 1000 W
- 7 PAR64 CP61 1000 W
- 6 LED PAR RGBW+ZOOM 10-60°
- 4 stands h=1.8 m for PCs
- smoke machine with dmx control

For the openairs, specific venues – please, contact us – there we totally change the light plot in favor of more intelligent lights. We could adjust it for the kit the venue has.



Key	
	Profile 25°/50° 1Kw
	PC 1 Kw
	Par Led RVBW ZOOM Martin Rush2 or
	Par 64 NSP
	Floor
	H:1.8 m Stand

**VP** Projector video center in the audience

---

---

## VIDEO

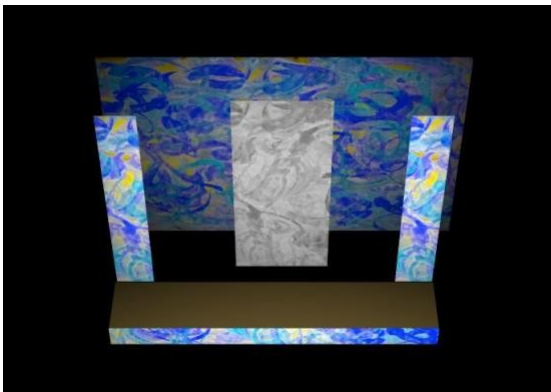
---

Front video projection – 16 000 - 20 000 ANSI lumens, the lens should let the projection open over the whole stage width.

We provide HDMI output from our vj's computer.

Screens (**provided by venue**) – all could be made of textile, paper, mesh, oilcloth – should be white or close-to-white color:

- central screen: 6 x 3 m, vertical
- side screens: 6 x 1 m, vertical
- riser skirt: 8 (6) x 0,6 m, horizontal
- backdrop or empty back wall



---

---

## SURTITLES

---

We always use titles during our performances. We can use the venue surtitling system, if it exists. Sometimes we need person who will run them, the ideal variant if he knows Ukrainian, but if no it's also possible. Usually we use Glypheo for Mac. If you need more detailed specification, please write to Manyasha [badmeduza44@gmail.com](mailto:badmeduza44@gmail.com), cause after discussing video setup with your crew, some changes are possible.

\* Translations in English, German, French are OK

---

---

## HOSPITALITY

---

- 2 secure dressing rooms with lockable doors and keys near the stage (big enough for 10 people)
- min. 10 chairs
- electrical outlets
- iron + iron desk
- enough light for make up
- 7 make-up tables
- clothes rack to hang for costumes
- 1 – 6 foot mirror
- 7 middle cotton towels
- tissues for make-up removing
- wet towel wipes
- WC and shower are near the dressing rooms (separate from audience)

---

## CATERING RIDER

---

### On arrival:

- min 7 liters of still mineral water (in a bottle);
- tea (black, green, herbal);
- coffee;
- milk;
- sugar;
- lemons;
- a selection of fruit juices (minimum 3 liters)
- fruit and vegetable trays or local seasonal fruit (avocado is important);
- nuts;
- 20 vegetarian and non-vegetarian sandwiches (fish is also possible);
- 2 bottles of dry white wine
- 10 warm meals – served 2 hours before performance. If not possible, a \$22 /person and per meal during the whole stay will be given to the tour manager at time of arrival, and negotiate in the contract.
- **Dietary Restrictions:** Ruslana – vegan (no meat, no fish, no eggs), Tetiana, Vlad – pescatarians (no meat).

### CONTACT TOUR

#### Stage manager :

Nicolas PRIOUZEAU : +33 682 03 06 58 - [nicolas.priouzeau@gmail.com](mailto:nicolas.priouzeau@gmail.com)

#### Sound engineer :

Simon AUFFRET : +33 788 26 84 05 - [auffret.simon@orange.fr](mailto:auffret.simon@orange.fr)

#### Droles de Dames = production

Christine HUET : +33 614 73 89 10 - [christine@dddames.com](mailto:christine@dddames.com) - administration

Eulalie FAGES : + 33 643 29 99 46 – [eulalie@dddames.com](mailto:eulalie@dddames.com) – Tour organisation