

**JAMIE ADKINS**

***Circus  
INgognitus***

**Technical Rider**

Version: January, 2014

Technical Director for Europe  
Christophe de le Court  
delecourtch@wanadoo.fr

**Technical Director**  
**Olivier Rosa**  
Circus INcognitus  
dt.circusincognitus@gmail.com

514-497-6054 mobile

[jamieadkins.com](http://jamieadkins.com)

## Circus Incognitus

### LENGTH

60-70 minutes (short version available)

### TOURING MEMBERS

2 people:

- 1 artist
- 1 stage manager

The following technical requirements represent the ideal conditions required by Jamie Adkins in Circus Incognitus for the production.

### SCHEDULE

Jamie Adkins will arrive with one (1) van. Please see that the loading area is cleared of all vehicles, snow, ice, etc... prior to arrival.

**Pre-hang:**

2 hours, before the arrival of the touring members

**Technical Set-up:**

6 hours, before the performance (if the pre-hang is done)  
8 hours, before the performance ( if the pre-hang is not done)

**Strike:**

Duration: 2 hours, after the performance  
**Note:** Touring members participate in the setup and the strike

### LOCAL CREW

**Set up:**

- 2 stagehands / propsman
- 4 electricians
- 1 sound tech
- 1 rigger / flyman

**Show:**

- 1 Stagehand (cues in backstage)
- 1 light board operator
- 1 Sound tech

Please initial:

**Circus INcognitus**

**STAGE**

*(Supplied by the PRESENTER)*

- Width:** • 25-0” min. (+12-0" per wing)
- Height:** • 18-0” min.
- Depth:** • 20’-0” min.

The entire stage floor must be even, free of imperfections. **If the floor isn’t adequate, the presenter have to supplied a Marley.** The wing space and backstage areas must be free of any obstructions and broom swept regularly. The stage floor must be mopped prior to curtain.

**AERIAL ACCESSORIES**

*The stage weights have to be supplied by the PRESENTER*

*The rigg stock will be supplied by Jamie Adkins*

**Human rigg :**

The anchorage points for the slack wire : we need **2 x 1980 lbs / 900Kg**

- 1 x stage left and 1 x stage right
- Spacing : 15 feet upstage from the proscenium and 20 feet on each sides of middle stage.

**\* See counterweight plot join to the technical rider.**

**MASKING**

*Supplied by the PRESENTER*

- 4 black velour Borders
- 4 pairs of black velour legs in Italian configuration
- 1 black Backdrop
- \*A detailed plan (Line set) will be supplied.**

Please initial:

**Circus Incognitus**

**LIGHTING**

*Supplied by the PRESENTER*

**Board:** 1 Compulite Spark 4D w / Color **VGA** monitor with cabling  
 \* or equivalent of 108 channels and 50 cues  
**Dimmers:** 48 dimmers of 2,4 kilowatts  
**Company Switch:** 3Ø 120/ 208 V / 60 amp.  
**Smoke machine:** MDG atmosphere or similar  
**Instruments:** minimum of 38 instruments

Quantity	Type	Power	Notes
12	Fresnels (PC)	1000 Watts	With barn doors
17	Lekos 26 degrees ETC Source 4	575 Watts	2 are on floor base
09	PAR 64 NFL (narrow)	1000 Watts	

- Lekos can be replaced with variable degree lenses.
- All Fresnels must have barn doors.
- All Lee colour media must be supplied by the PRESENTER.  
 (See gels list join to the technical rider)
- The Company requires the use of a genie lift for the focus.
- Minimum working height 7.3m (24'-0")  
**\*A detailed plan will be supplied.**

Please initial:

## Circus Incognitus

### SOUND

Supplied by the PRESENTER

**Control unit**

- 1 x Sound board (minimum 16 inputs with parametric E.Q)
- 2 x Channels E.Q 1/3 octave
- 1 x CD player
- 1 x Multi-effects Yamaha SPX 990
- 1 x compressor Dbx 1066 (2channels)
- 1 x snake minimum 16 in and 4 returns

**Monitors**

- 2 x wedges place on stage (1 stage right, 1 stage left)

**PA**

- Sound system should be able to deliver a level of **96 db** a weighted (undistorted) throughout the seating area.
- System should consist of main Left and Right, sub, front fill and delay. Preferred kits are: Meyer, EAW, L-Acoustic, Clair Brothers, Adamson

**Microphones**

- 1 sm58 microphone on Atlas straight stand

**Clearcom**

- 1 at the lighting board
- 1 at the soundboard
- 2 on stage (1 DSL, 1 DSR)

**Power on stage**

- 2 circuits 120/240 V, minimum 15amp for back line (same source as audio)

**The Company brings:**

- 2 X wireless belt pack microphones/receiver (1 x Lavalier, 1 x ATM 35)
- 3 PCC Floor Microphones

Please initial:

## Circus INcognitus

### PROPS

*Supplied by the PRESENTER*

- 1 props table in wing area (1 stage right)
- 1 costume “racks”
- 1 mop and 1 bucket in backstage
- 1 fans (household, free standing to dry clothes)  
or all day access to a dry machine
- During the rehearsals and performances, **2.5 kg (5 lbs)** of cubed ice must be available backstage in case of injuries.
- The PRESENTER must provide a minimum of **6** water bottles of 500ml (not soft drink) for each rehearsal and performance. These should be stored in the wing areas.

### CATERING

*Supplied by the PRESENTER*

For the comfort of the artist and crew, the PRESENTER must provide a light catering service with the following variety of sandwiches, light salads (pasta and/or otherwise), vegetables, fruits, nuts, muffins, biscuits (cookies), juice, soft drinks, coffee, tea and carbonated water. Catering should be provided during the technical set-up, as well as before each rehearsal and performance.

Should there be less than three hours between advertised starting times, the PRESENTER must provide more substantial catering for the artists, musicians and production crew. Hot and/or warm buffet style catering with a variety of dishes is recommended. Glasses, plates, bowls, flatware and napkins should also be provided.

### DRESSING ROOMS

*Supplied by the PRESENTER*

- 1 dressing rooms accommodating 1 artists.
- 1 production office accommodating 1 technician.

These dressing rooms must be equipped with showers, toilets, sinks, mirrors, make-up tables, costume racks as well as a steamer, iron & board and a washer and dryer. All facilities must be away from the general public.

Dressing rooms should be cleaned prior to the Company's arrival, lighted sufficiently for applying make-up and be equipped with Kleenex tissues and cloth towels.

Please initial:

**Circus Incognitus**

**RESPONSIBILITIES of the PRESENTER**

**WARDROBE:** **Jamie Adkins** company requires the exclusive use of one (1) washing machine, one (1) dryer and one (1) sewing machine. In case, of **Jamie Adkins** presents more than 5 shows, a **wardrobe mistress** will be required to wash, dry, press and repair all costumes on the first day of set-up, as well as before the scheduled rehearsals and performance. Dry cleaning should be provided. Please note that the costumes must be ready 2 hours prior to call times.

**PRODUCTION OFFICE:** One room which can be used as a production office by **Jamie Adkins** with a desk, a telephone (local line), and access to a fax, a photocopy machine and Internet.

**REHEARSAL:** **Jamie Adkins** requires access to the stage and dressing room **6** hours before the show in order to rehearse and warm-up. When there are **2** shows, artist and crew will arrive **3** hours before the show. Lights and sound must be provided.

**AND**

A rehearsal space with no obstructions, with a suitable floor of a minimum size of 9m x 9m x 6m high (30'-0" x 30'-0" x 20'-0" high). This rehearsal space should be located within the building where the performances take place or within a reasonable distance of it. This is required for the musicians. **Jamie Adkins** requires access to an acoustic piano.

**HOURS OF OPERATION:** The PRESENTER must inform the **Jamie Adkins**. of the hours of operation of the theatre, as well as any rules or regulations for the period of the production

**SECURITY:** The PRESENTER must ensure that the theatre is secure and that the **Jamie Adkins**. 's equipment (set, tools, rigging equipment, personal possessions) are safe and attended for during the run of the production. The PRESENTER will be responsible for any loss, damage or theft which may occur.

**MAINTENANCE:** The PRESENTER must ensure the cleaning and daily maintenance of the stage. Generally, 1 hour before the scheduled rehearsal or show call. The cleaning of the dressing rooms will be done upon request from the **Jamie Adkins** Technical director.

Please initial:

---

## Circus INcognitus

**TEMPERATURE:**

The PRESENTER must maintain an adequate temperature range of the stage, dressing rooms and other areas used during the production. Ideal range is between **20** and **22** degrees Celsius (**68 – 71.6 F**).

**RESTAURANTS:**

A list of restaurants close to the theatre and the hotel, including food category, price range and business hours must be sent to the **Jamie Adkins**

**MEDICAL SERVICES:**

A list of the following services and specialists, including phone numbers should be available to the Stage Manager upon arrival of the **Jamie Adkins.:** Emergency ambulance, Doctor, Dentist, Chiropractor, Physiotherapist, and the nearest medical centre.

**PARKING:**

The PRESENTER must be able to provide a safe and guarded parking space, within a reasonable distance of the site of the performance, for the following vehicles if the case may be :

- 1 Cube van 16 feet
- 1 mini-van (7 passengers)

This Technical Rider constitutes an integral part of the contractual agreement between the PRESENTER and the **Jamie Adkins**. Any modification of this technical rider must be negotiated between the Technical Directors of both parties and a signed copy must be attached to the contract.

For further information, please do not hesitate to contact:

**Olivier Rosa**

Technical Director Circus INcognitus  
dt.circusincognitus@gmail.com

[jamieadkins.com](http://jamieadkins.com)

Please initial:

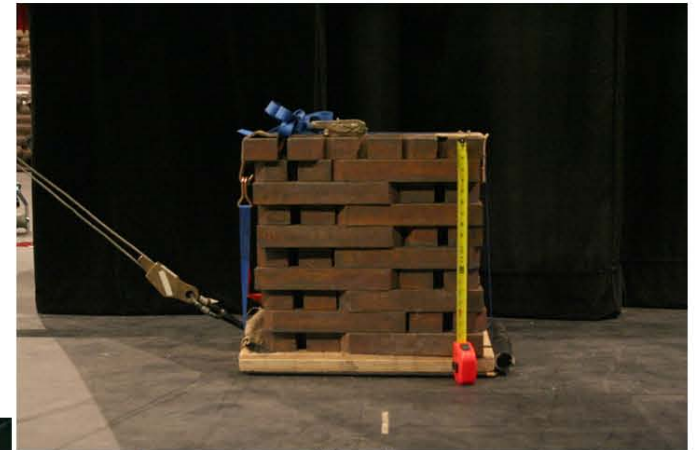


# RIGGING OPTIONS FOR SLACK WIRE 2,000lbs/side (min.1,800lbs)

## not shown:

- sling wrapped around theater's fly system post
- cement parking curbs on wood pallets
- industrial tent posts (for outdoor stages surrounded by grass)
- lag bolt system (requires drilling)

## Stage weights

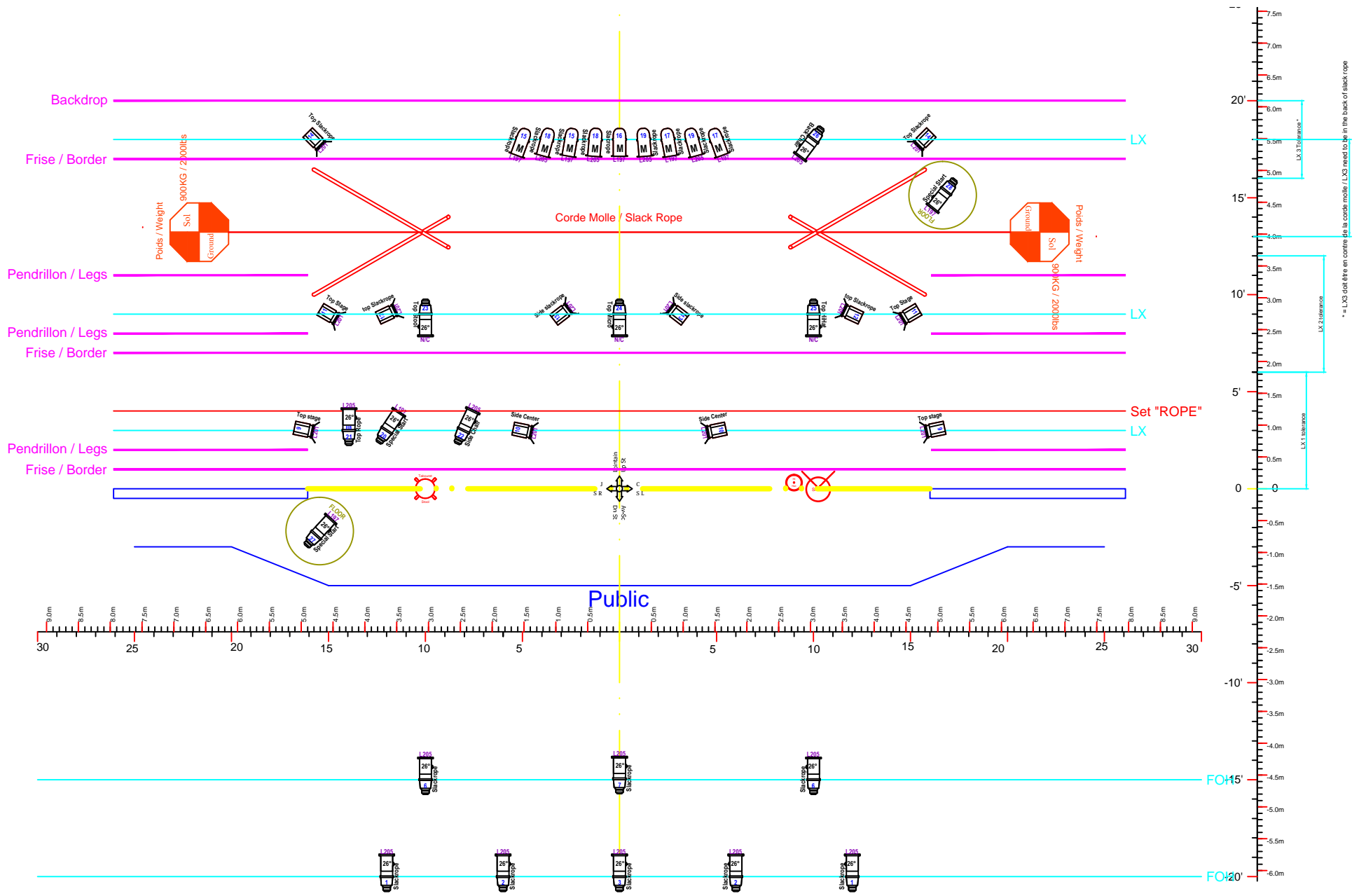


## Water Barrels



## Skyjack





\*= LX3 doit être en contre de la corde molle / LX3 need to be in the back of slack rope

**COLOR**

**LENS**

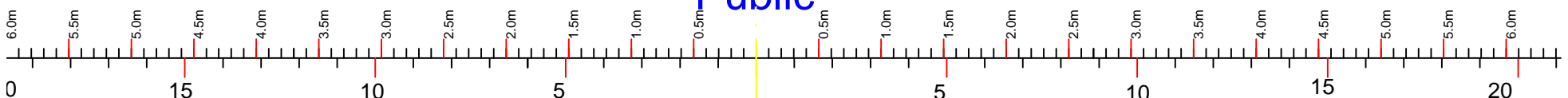
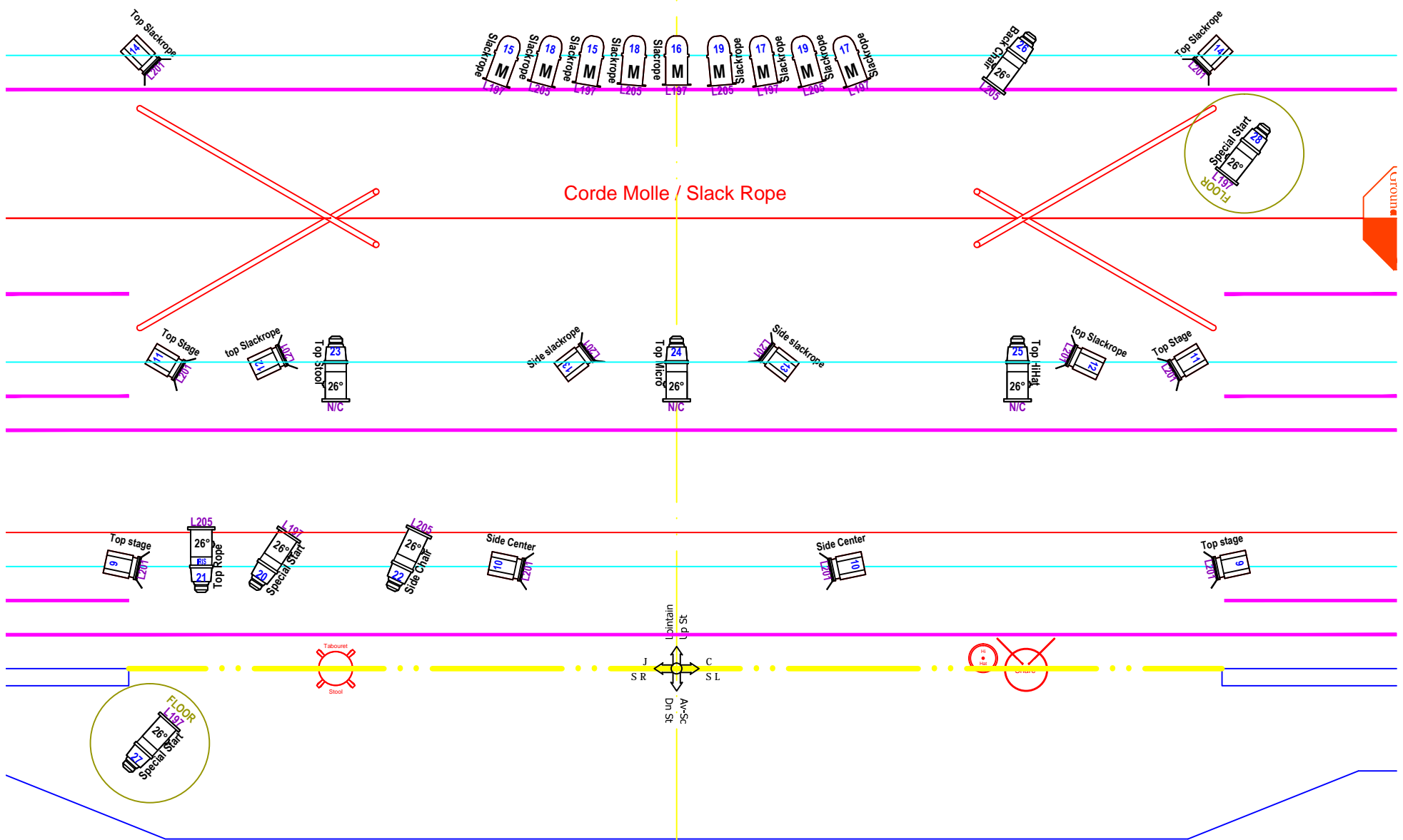
**IRIS**

**CHANNEL**

- Par Medium / CP62
- Fresnel 1Kw / PC 1Kw
- Leko 26° / Découpe 26°

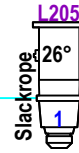
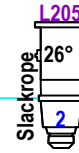
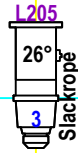
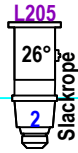
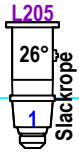
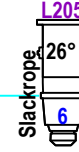
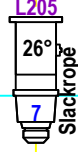
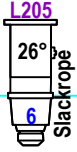
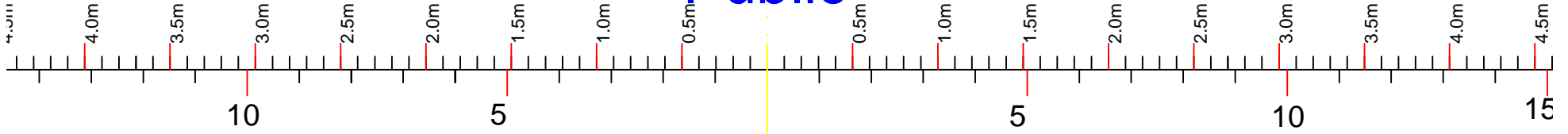
Show <b>Circus Incognitus</b>			DO NOT SCALE DRAWING		
Venue			Production <b>Jamie Adkins</b>		
City		Date <b>11/7/13</b>	Design by : <b>Nicolas Descoteaux</b>		
Technical Director : <b>Olivier Rosa</b>			Tour Manager :		
Ver	Datum	Name	Ver	Datum	Name
Drawing Name : <b>GÉNÉRAL</b>					Sheet





Show <b>Circus Incognitus</b>				<b>DO NOT SCALE DRAWING</b>			
Production Venue				Production <b>Jamie Adkins</b>			
City				Design by : <b>Nicolas Descoteaux</b>			
Date <b>11/7/13</b>				Technical Director : <b>Olivier Rosa</b>			
Tour Manager :				Drawing Name :			
<b>Ver</b>	<b>Datum</b>	<b>Name</b>	<b>Ver</b>	<b>Datum</b>	<b>Name</b>	<b>Sheet</b>	
						<b>STAGE LX</b>	

# Public



Show <b>Circus Incognitus</b>						DO NOT SCALE DRAWING						
Venue						Production <b>Jamie Adkins</b>						
City						Design by : <b>Nicolas Descoteaux</b>						
Date <b>11/7/13</b>						Technical Director : <b>Olivier Rosa</b>						
Tour Manager :						Drawing Name :						
Ver	Datum	Name	Ver	Datum	Name	<b>FOH</b>						Sheet